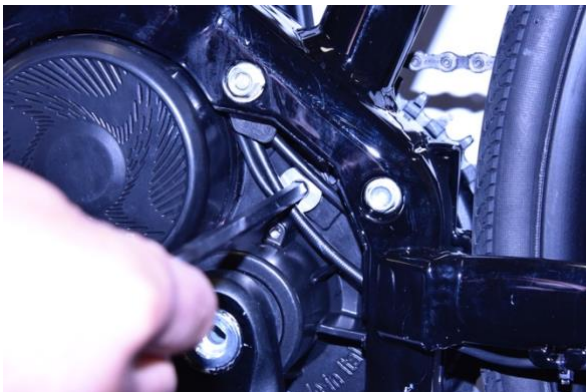




FIRMWARE UPDATE

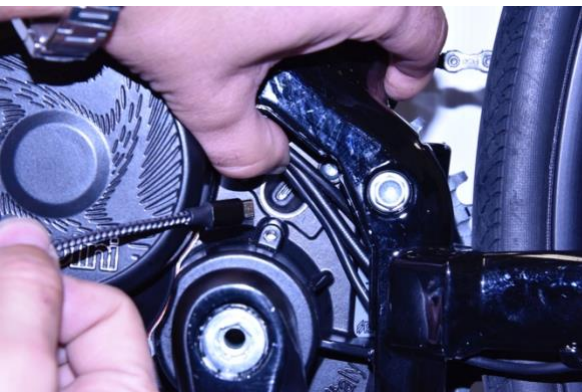


Remove the plastic cover using a Torx 20 key



Remove the aluminum cap using a CH6 a hex key

Switch the battery on



Connect the micro USB cable to the motor (be careful to the way of connection) and the USB plug to a PC with Window 7 installed or latest versions.

If you use **Windows 8** or **Windows 10**, the motor is recognized automatically once the USB cable is connected to the PC; if you use Windows 7 it is necessary to install the driver

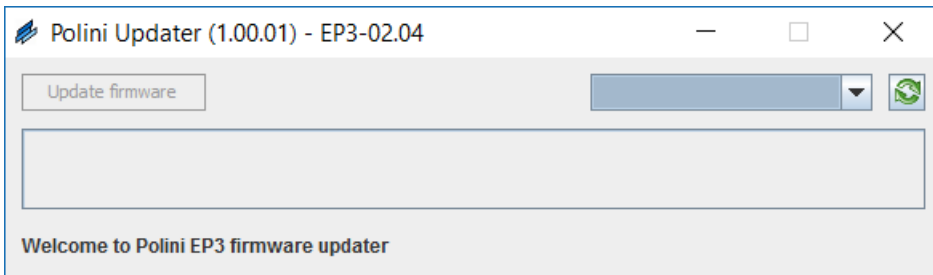
https://www.poliniebike.com/wp-content/uploads/2017/06/Installazione-driver-motore_IN.pdf

For all the operative systems, check the 1.7 Java or latest version is installed. If it is not installed download it and install java from the site www.java.com .

Download the latest version of the Firmware "EP3-xx.xx.jar" from the web site

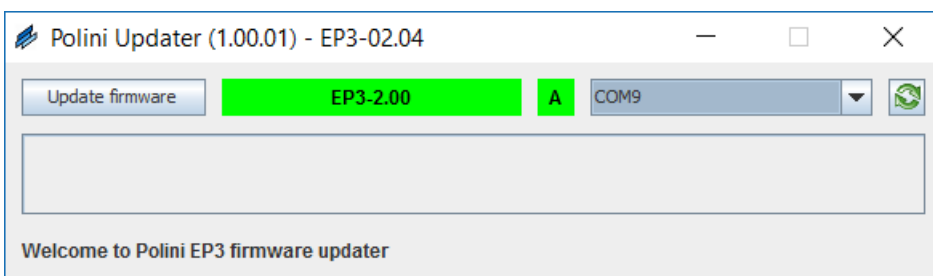
https://www.poliniebike.com/wp-content/uploads/2017/06/EP3_firmware.zip

Run the downloaded file "EP3-xx.xx.jar" using Java. The following screen will appear:



Note: If Java has not been installed previously, the file may be opened automatically by programs like Winzip or Winrar displaying unusable files. Be sure to install Java correctly and the file will be opened with Java. Optionally open the file by clicking the right button of the mouse and select "Open with" and "Java"

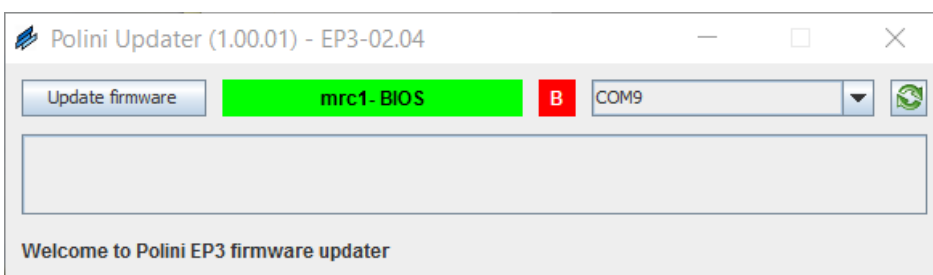
If the communication port (COM) is not present in the drop-down menu, press the update ((🔄)) button. If you do not see the COM yet you must verify that the USB has been recognized in "Device Manager" and install the driver motor downloading it from its site.



When the COM is selected and the communication is active, the firmware version currently installed is visible inside the green bar.

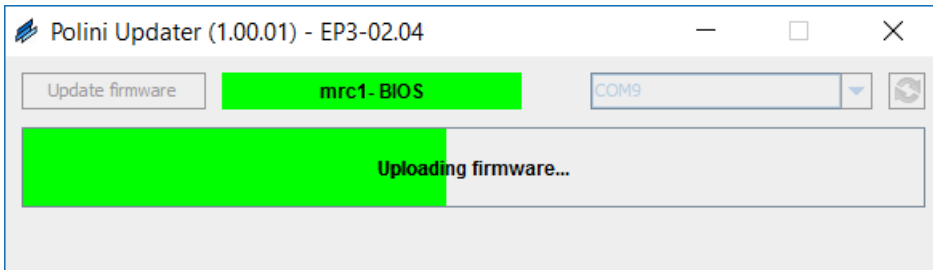


When you connect the USB cable without switching the battery on, the following screen will be displayed:

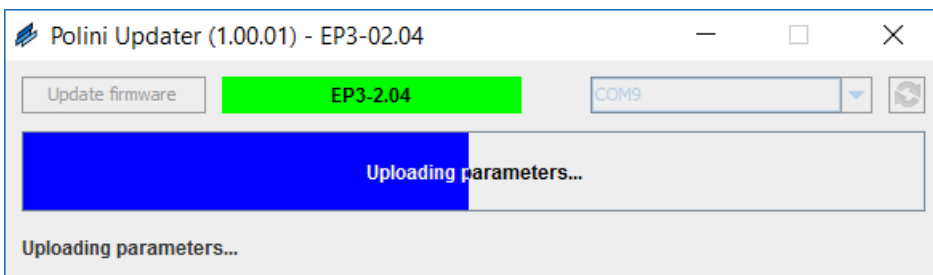


In this case the firmware version currently installed won't be displayed but it is anyway possible to run the firmware update.

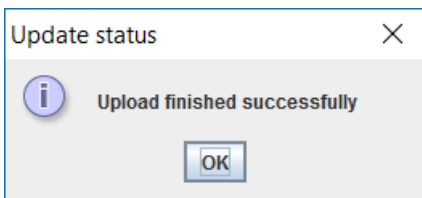
Click "Update firmware" to start the uploading of the firmware, highlighted by the green bar:



When the uploading finishes, wait the data uploading that are highlighted by a blue bar.



The end of the process is highlighted by the pop-up window.



Now the uploading is finished and it is possible to close the program. Remove the USB cable and place the aluminum cap and the plastic cover again.

Start the bicycle and test it.